



Introduction to BR Softwares

Cessy Karina

ITSO/ITU WORKSHOP on Satellite Communications

Afralti, Nairobi

8 - 12 June 2015



150 1865 2015



BR Space Software

Why?

- Purpose of BR Software

What's in for you?

- How can BR Software help you?

Where to get it?

- Where to download BR Software?

Coming soon...

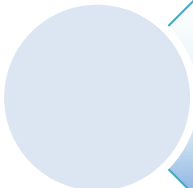
- The future of BR Software & Databases

BR Space Software



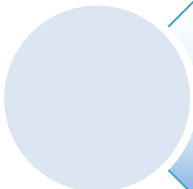
Why?

- Purpose of BR Software



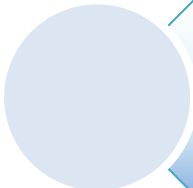
What's in for you?

- How can BR Software help you?



Where to get it?

- Where to download BR Software?



Coming soon...

- The future of BR Software & Databases



BR Software is
designed to help you

PREPARE ELECTRONIC FILINGS

- Create and validate filings
- Create graphics diagrams
- Run technical examination
- Comment
- Query BR data

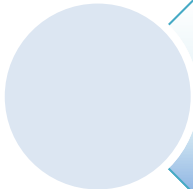
BR Space Applications aim to be

Efficient
Reliable
Consistent

- Comply with Radio Regulations
- Maintained by developers and engineers
- Used by administrations and operators



BR Space Software




Why?

- Purpose of BR Software



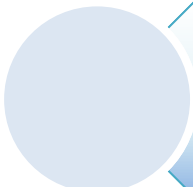
What's in for you?

- How can BR Software help you?



Where to get it?

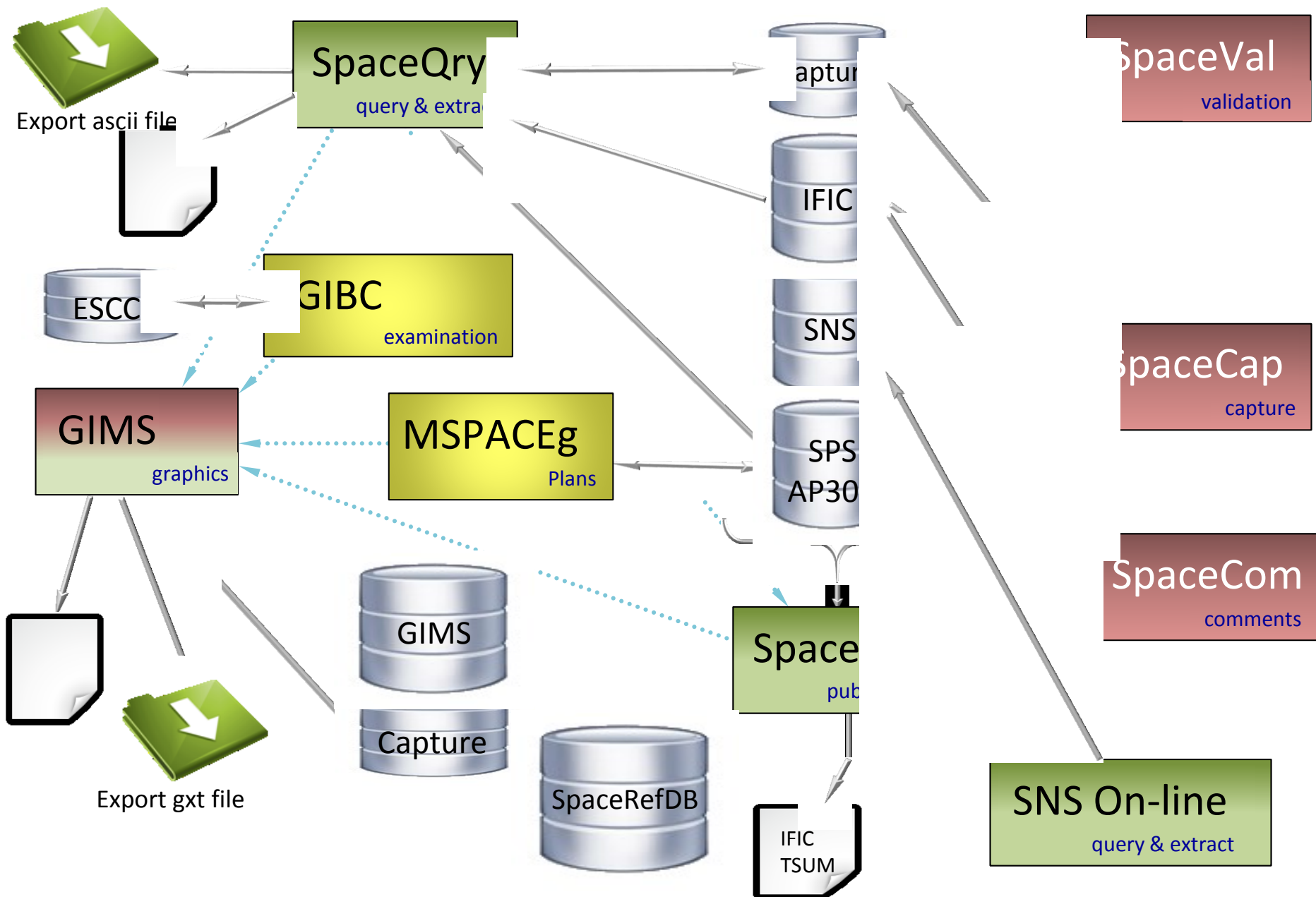
- Where to download BR Software?



Coming soon...

- The future of BR Software & Databases

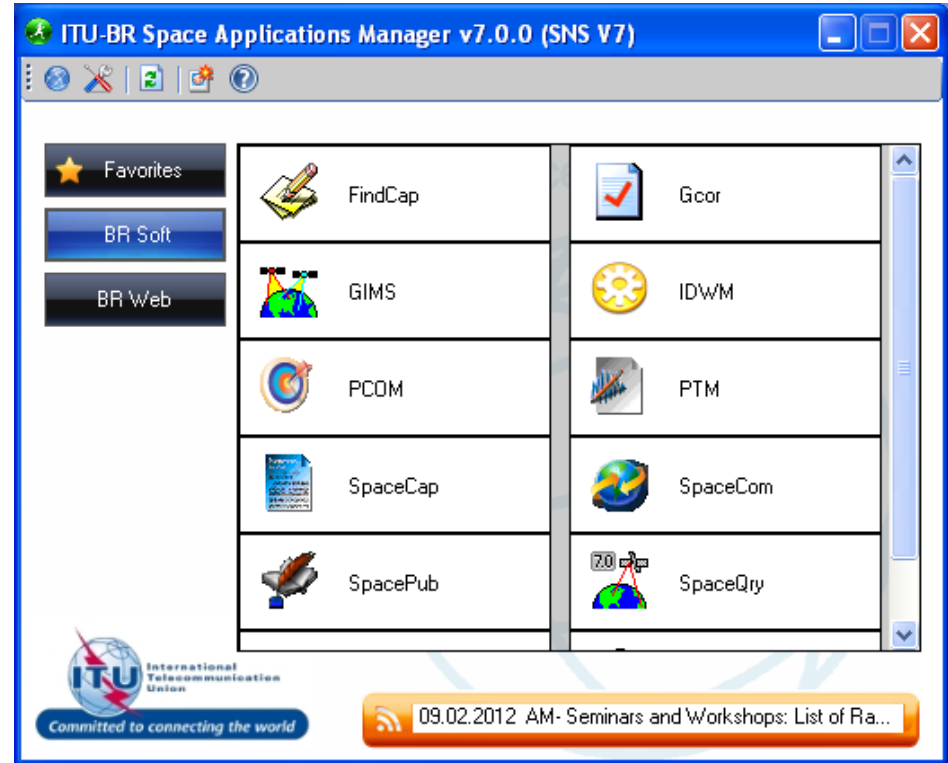
Space Network System



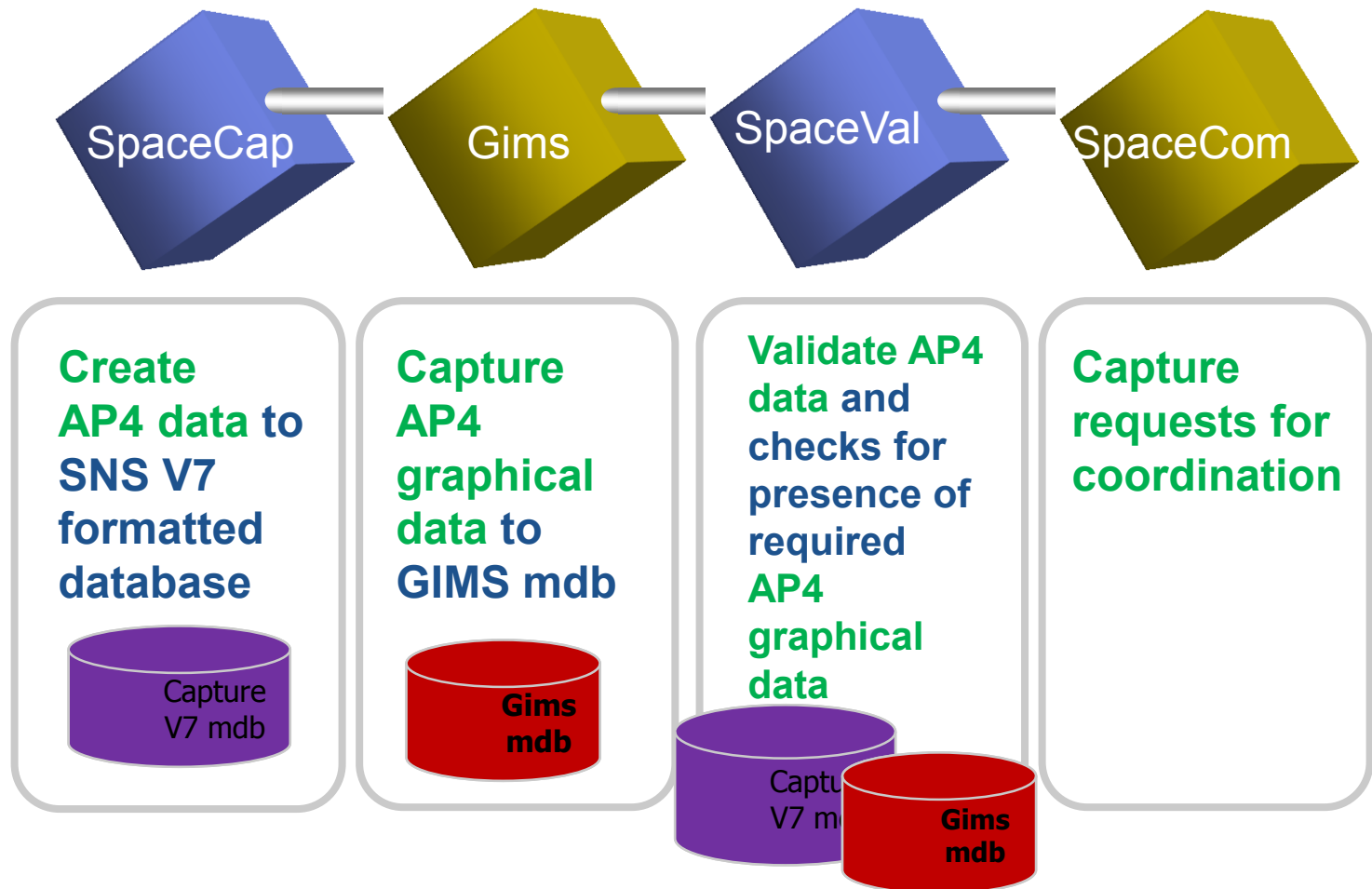
Space Application Manager



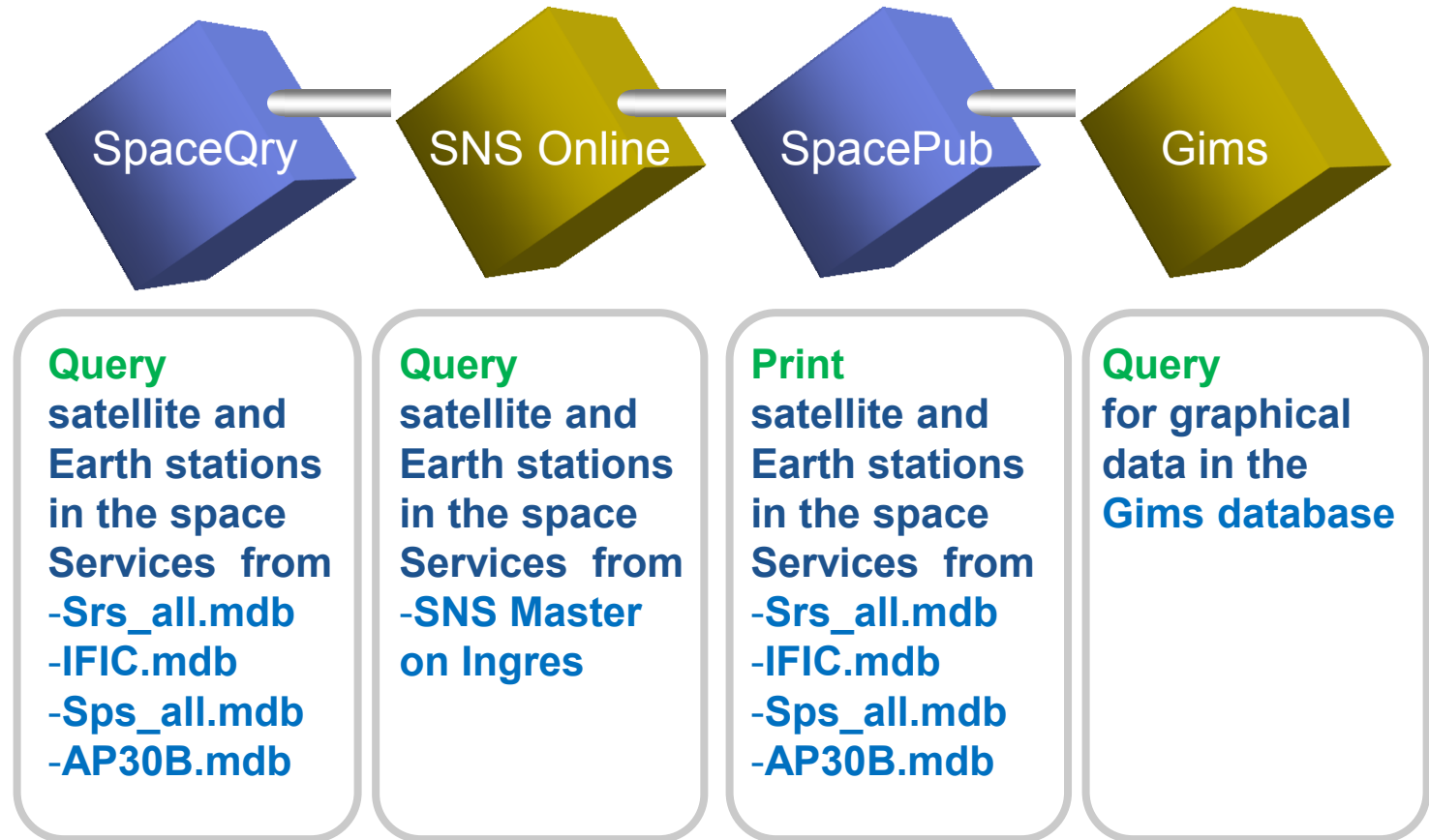
**ONE
INTERFACE
to launch BR software**



BR Software to Create BR Data



BR Software to Query BR Data



BR Soft to Run Technical Exams

GIBC

Graphical Interface for Batch Calculations

PFD

AP7

AP8

AP30B

SPS

the space plans software (formerly “MSpaceG”)

Determination of the coordination requirements for the Plans for space networks in Appendices 30, 30A of the Radio Regulations

BR Space Software

Why?

- Purpose of BR Software

What's in for you?

- How can BR Software help you?

Where to get it?

- Where to download BR Software?

Coming soon...

- The future of BR Software & Databases

BR Software is FREE



ITU BR software webpage

BR IFIC DVD*

* 1 free per administration else
CHF600/DVD or CHF3530/year

Latest BR Software Version

Where you can check for latest versions



Download from the BR web site

<http://www.itu.int/ITU-R/software/space/index.html>



From the IFIC DVD



Automatic Update

Installation requires administrator privileges

BR Space Applications Setup

Select Applications

Select Applications to Install

- ☒ SAM (Space Application Manager)
- ☒ GIBC (Graphical Interface Batch Calc.)
- ☒ GIMS (Graphical Interference Management)
- ☒ SPS (Space Plans System)
- ☒ SpaceCap (Space Data Capture System)
- ☒ SpaceCom (Space Comments Capture System)
- ☒ SpacePub (Space Publications System)
- ☒ SpaceQry (Space Query and Extract System)
- ☒ SpaceVal (Space Validation System)

Select All

Clear All

InstallShield

< Back

Next >

Cancel

BR IFIC DVD



BR Soft



Setup.exe

BR Software Version

- Each World Radio Communication Conference introduces new resolutions and changes to the Radio Regulations
 - **Decisions taken at WRC 2007 : v 6.1**
 - e.g. AP30B , Sensor Information
 - **Decisions taken at WRC 2012 : v 7**
 - New tables to support the new due diligence procedure for 21-22.4 GHz (RES552)

BR Space Software

Why?

- Purpose of BR Software

What's in for you?

- How can BR Software help you?

Where to get it?

- Where to download BR Software?

New projects...

- SpaceWisc and The future of BR Software & Databases

SpaceWisc



SpaceWISC

New Filings

Draft Filings

Submitted Filings

Published Filings

Users Manager

Support ▾

Search this site



Home

Welcome to SpaceWISC for API

Welcome to SpaceWISC (Space web based interface for secure communication) , the online submission system to the Bureau for Advance Publication Information (API) subject to coordination procedure under Section II of Article 9 of the Radio Regulations, in accordance with **Resolution 908 (WRC-12)**.

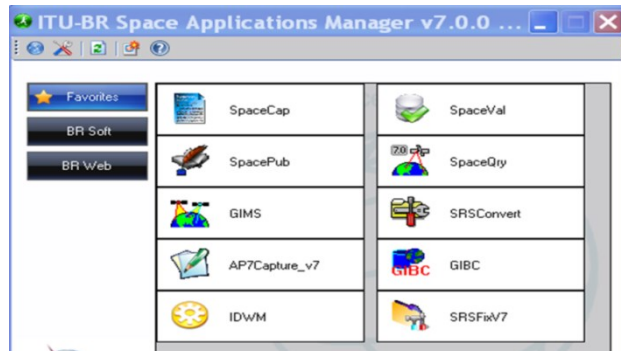
For more information see ITU-R Circular Letter [CR/363](#) or the Bureau support page at: <http://www.itu.int/ITU-R/go/s-wisc/en>

Help hotline telephone number: **+41 22 730 6777**

Email: spacewisc@itu.int

PLEASE NOTE THAT ALL API'S CAPTURED OR SUBMITTED THROUGH THIS BETA SPACEWISC TEST SYSTEM WILL BE USED SOLELY FOR TEST PURPOSE, THEY HAVE NO REGULATORY CONSEQUENCES AND THEY WILL BE REMOVED AT THE END OF THE TEST PERIOD.

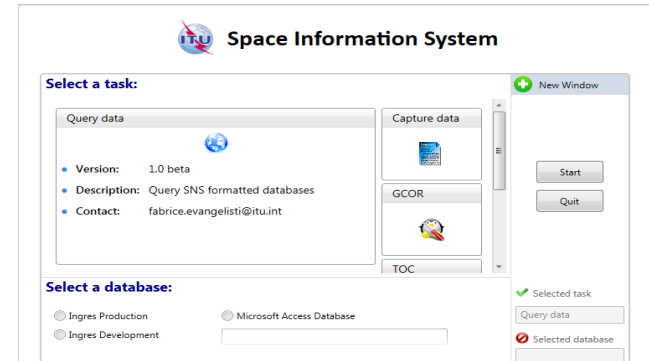
Future of BR Space Software



Current BR Space Network System



Providing you with services, support and training



Future BR Space Information System



In the future:

providing you with a new system

- Single user interface
- The same look and feel
- Rich end user experience
- Gain in terms of training and productivity